

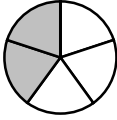
Handout**3 – 6**
Section 20

Reinforcement

Equivalent Fractions

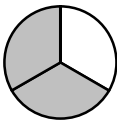
1. Write the numerators and denominators needed to make the 3 fractions equivalent.

a)



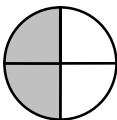
$$\frac{2}{\square} = \frac{\square}{\square} = \frac{\square}{\square}$$

b)



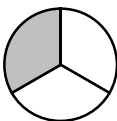
$$\frac{2}{\square} = \frac{\square}{\square} = \frac{\square}{\square}$$

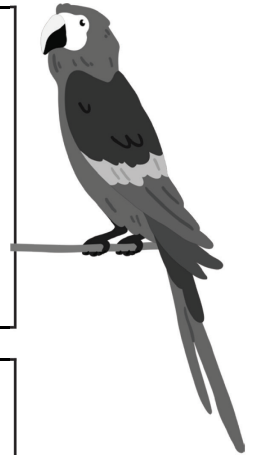
c)



$$\frac{2}{\square} = \frac{\square}{\square} = \frac{\square}{\square}$$

d)

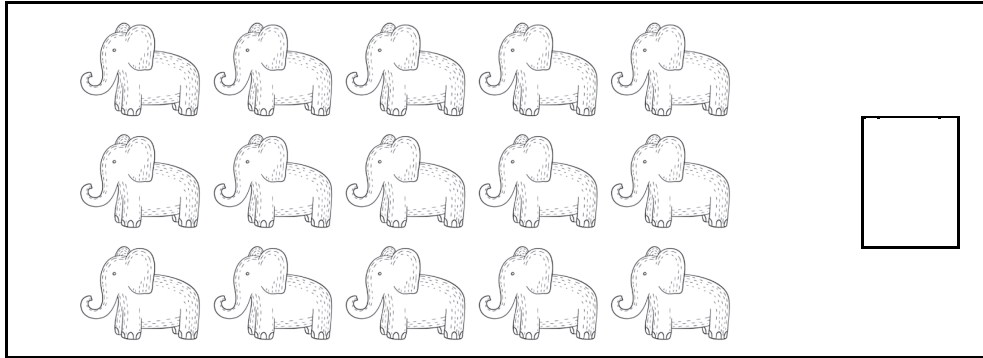


$$\frac{1}{\square} = \frac{\square}{\square} = \frac{\square}{\square}$$


**2. Represent each fraction by colouring the correct number of animals.
Write an equivalent fraction.**

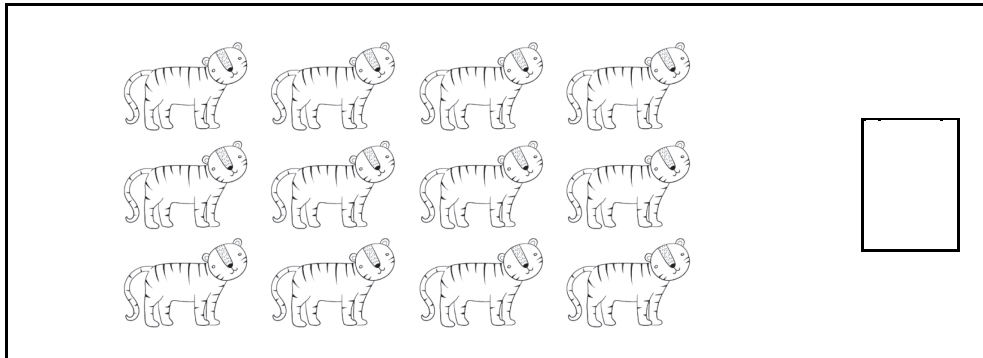
a)

$$\frac{1}{5}$$



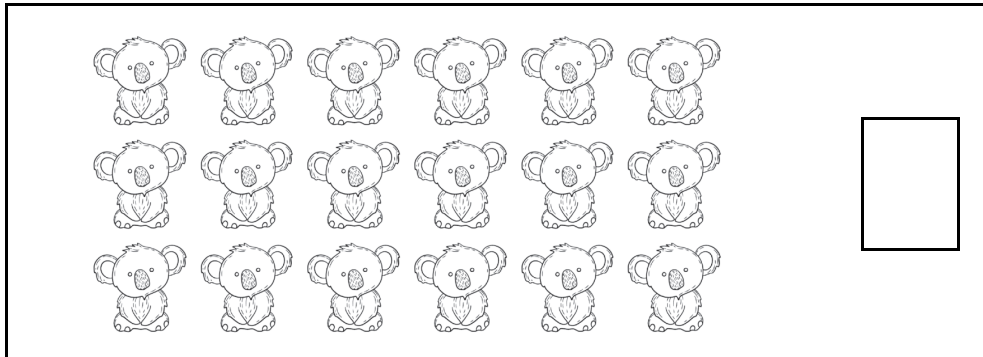
b)

$$\frac{1}{2}$$



c)

$$\frac{2}{6}$$



d)

$$\frac{3}{5}$$

