

Handout**1 – 3**
Section 3

Reinforcement

**ANSWER
KEY****Decomposing a Number –
Comparing Numbers****1. Decompose** each number according to the place values of its digits.

a) 342 $300 + 40 + 2$

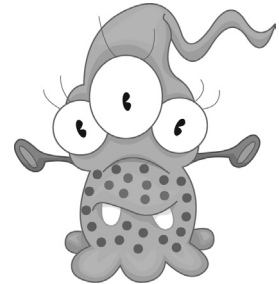
b) 1732 $1000 + 700 + 30 + 2$

c) 1562 $1000 + 500 + 60 + 2$

d) 896 $800 + 90 + 6$

e) 739 $700 + 30 + 9$

f) 945 $900 + 40 + 5$

**2. Decompose** each number according to its base 10 representation.

a) 234 $100 + 100 + 10 + 10 + 10 + 1 + 1 + 1 + 1$

b) 1026 $1000 + 10 + 10 + 1 + 1 + 1 + 1 + 1 + 1$

c) 453 $100 + 100 + 100 + 100 + 10 + 10 + 10 + 10 + 10 + 1 + 1 + 1$

d) 128 $100 + 10 + 10 + 1 + 1 + 1 + 1 + 1 + 1 + 1$

e) 603 $100 + 100 + 100 + 100 + 100 + 100 + 1 + 1 + 1$

3. Compare each pair of numbers. **Write** the correct symbol: $<$, $>$ or $=$.

a) 654 $(=)$ 654

b) 890 $(<)$ 1000

c) 569 $(>)$ 568

d) 1234 $(<)$ 1244

e) 937 $(>)$ 930

f) 726 $(=)$ 726

g) 1188 $(>)$ 1088

h) 548 $(>)$ 448

i) 608 $(>)$ 599

4. Write each number that has been decomposed. Then **compare** the pairs of numbers using the correct symbol: $<$, $>$ or $=$.

a) $800 + 50 + 4 =$ 854 $<$ 860 $= 800 + 60$

b) $900 + 70 + 3 =$ 973 $>$ 873 $= 800 + 70 + 3$

c) $200 + 10 + 3 =$ 213 $<$ 215 $= 200 + 10 + 5$

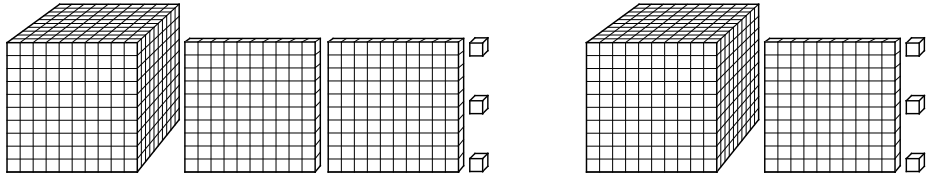
d) $1000 + 200 + 6 =$ 1206 $>$ 1026 $= 1000 + 20 + 6$

e) $1000 + 300 + 30 =$ 1330 $<$ 1333 $= 1000 + 300 + 30 + 3$

f) $200 + 40 + 1 =$ 241 $=$ 241 $= 100 + 100 + 10 + 10 + 10 + 10 + 1$

5. Write the numbers represented by the blocks. **Compare** each pair of numbers using the correct symbol: $<$, $>$ or $=$. Then **complete** the sentence to describe the difference between the 2 numbers.

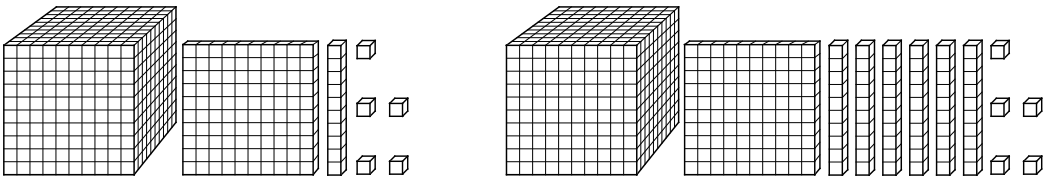
a)



1203 $>$ 1103

There is/are 1 more hundred in 1203.

b)



1115 $<$ 1165

There is/are 5 more tens in 1165.